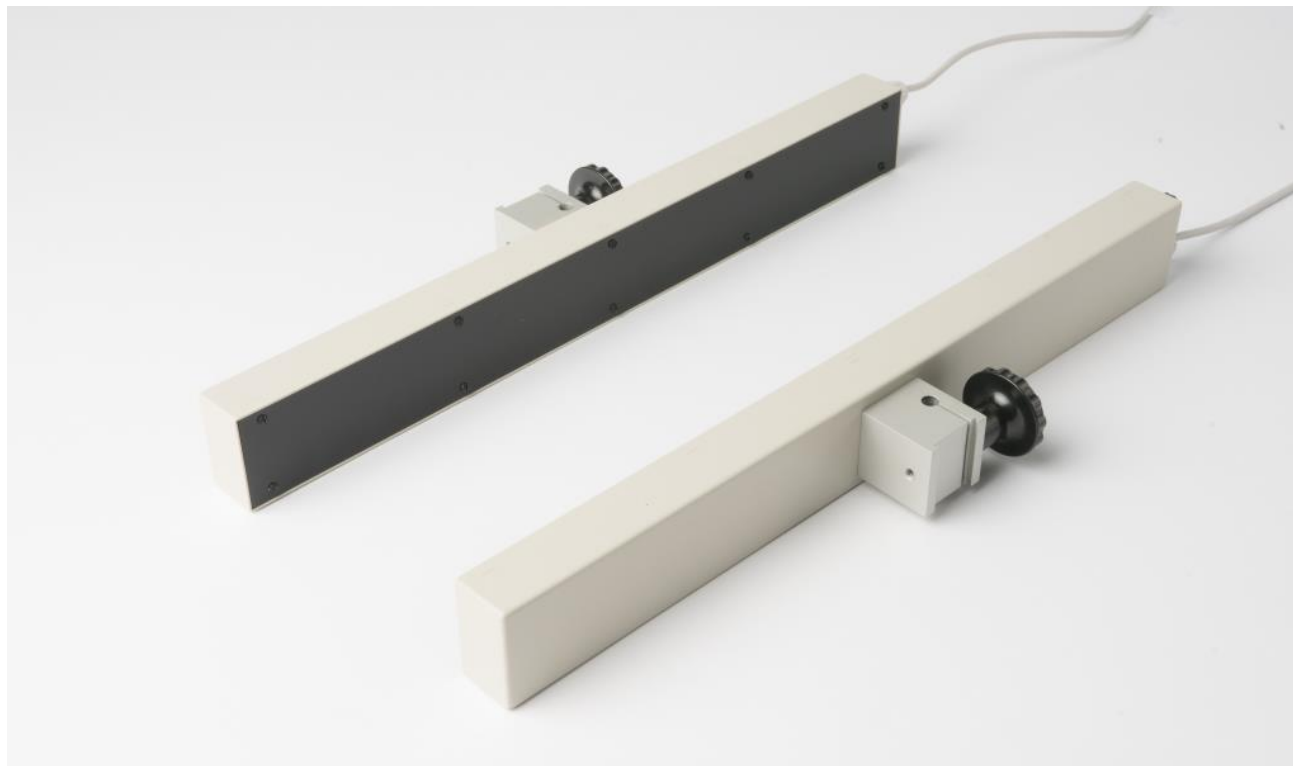


The ANY-maze Photobeam arrays



Overview

The ANY-maze photobeam arrays provide a 'curtain' of photobeams, and are often used to detect when an animal rears. They can also be used as movement detectors, generating reliable movement 'counts' in circumstances in which video tracking can't be used.

Details

- Available in 20cm, 40cm and 100cm widths.
 - Connect directly to the ANY-maze Digital interface.
 - Maximum separation between the emitter and receiver is 100cm.
 - 1.25cm spacing between beams.
 - Beams are read at minimum of 10Hz.
 - Individual beams can be independently enabled and disabled – very useful if the apparatus includes something which will normally block some beams.
 - Can be supplied with a stand and base.
- 2.75 metre cable terminated with a pluggable screw terminal block for connection to an ANY-maze Digital interface port.

Part numbers

<i>Part number</i>	<i>Width</i>	<i>Includes stand</i>
60001-01	20cm	Yes
60001-01A	20cm	No
60001-02	40cm	Yes
60001-02A	40cm	No
60001-03	100cm	Yes
60001-03A	100cm	No

Technical specification

Electronic	
Connection	Proprietary – connects directly to ANY-maze Digital interface
Read frequency	10Hz (minimum) (note 1)
Supply current	25mA
Emitter wavelength	880nm
Mechanical	
Array width (distance between first and last beams)	20cm, 40cm, 100cm
Maximum separation (distance between emitter and receiver)	110cm
Beam spacing (distance between one beam and the next)	12.5mm
Cable length between emitter and receiver	120cm
Cable length between emitter and ANY-maze Digital interface	275cm

Notes

1. In order not to compromise the minimum read frequency, only three 40cm arrays, or one 100cm array, can be connected to a single ANY-maze Digital interface. The interface itself enforces this rule.